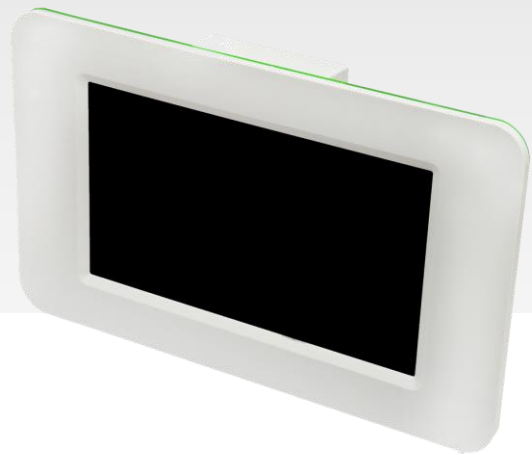




INDUSTRIAL SHIELDS

## USER GUIDE

### HUMMTOUCH ANDROID





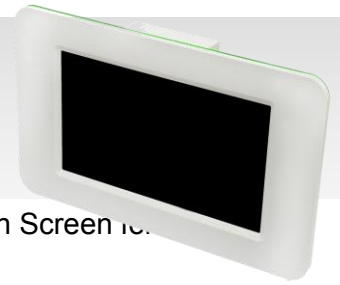
## Hummtouch “Android” User Guide:

### 1 Contents

1	HUMMTOUCH ANDROID GUIDE .....	3
1.1	General Specifications:.....	4
2	Power Supply.....	4
3	Screen configuration .....	5
4	I/Os Pinout .....	5
5	GPIO with Android: .....	7
6	Hummtouch 10.1” Dimensions: .....	7
7	Mechanical mounting: .....	7



## 1 HUMMTOUCH ANDROID GUIDE



Panel PC based on HummingBoard, incorporating a 10.1" capacitive Touch Screen for industrial environment using Android Operating System.

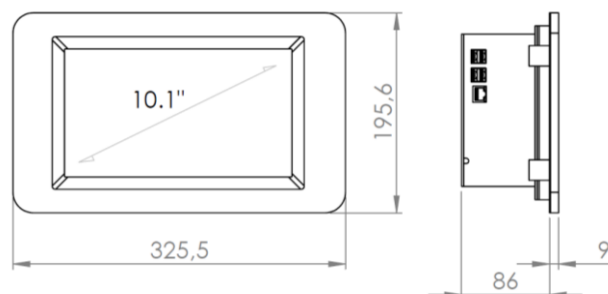
PANEL PC  
10,1"

LINUX  
LINUX OPERATION  
SYSTEM

ARDUINO  
Compatible with  
Arduino IDE

COM  
Industrial  
Communications

Panel PC HummTouch	
<b>TFT</b>	10.1" Capacitive LVDS, 315n, 170°viewing angle
<b>Format</b>	16:9, 1366x768
<b>SoC</b>	i.MX6 Dual Lite
<b>CPU</b>	64 bit, 1GB @ 800Mbps
<b>GPU</b>	GC880
<b>USB Ports</b>	2x2.0 USB (1 is used for Touch)
<b>Storage</b>	SD/ MMC/ SDIO slot (1x 4Gb included)
<b>Network connection</b>	10/100 Ethernet (RJ-45)
<b>Low level devices</b>	8x GPIO, SPI, I2C, UART
<b>energy consumption</b>	1,25A – 30W
<b>Power supply</b>	12-24Vdc
<b>Operative system</b>	Android



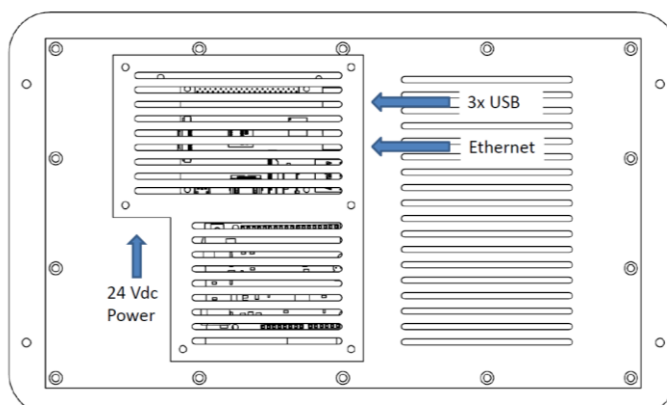


## 1.1 General Specifications:

Item		Touchberry PI 10.1"
Power supply voltage	DC power supply	12- 24Vdc
Power consumption	DC power supply	30VAC max.
External power supply	Power supply voltage	7 – 24.5 Vdc
	Power supply output capacity	1.2mA
Shock resistance		80m/s2 in the X, Y and Z direction 2 times each.
Ambient temperature (operating)		0° to 45°C
Ambient humidity (operating)		10% to 90% (no condensation)
Ambient environment (operating)		With no corrosive gas
Ambient temperature (storage)		-20° to 60°C
Power supply holding time		2ms min.
Weight		1.250 gr.

## 2 Power Supply

You need to connect 7 to 24 Vdc power supply.





### 3 Screen configuration



**Light:** Operation indication led

**On/Off:** Select the screen operation mode: (You need to choose HDMI operation mode)

**Menu:** choose and select the configuration mode

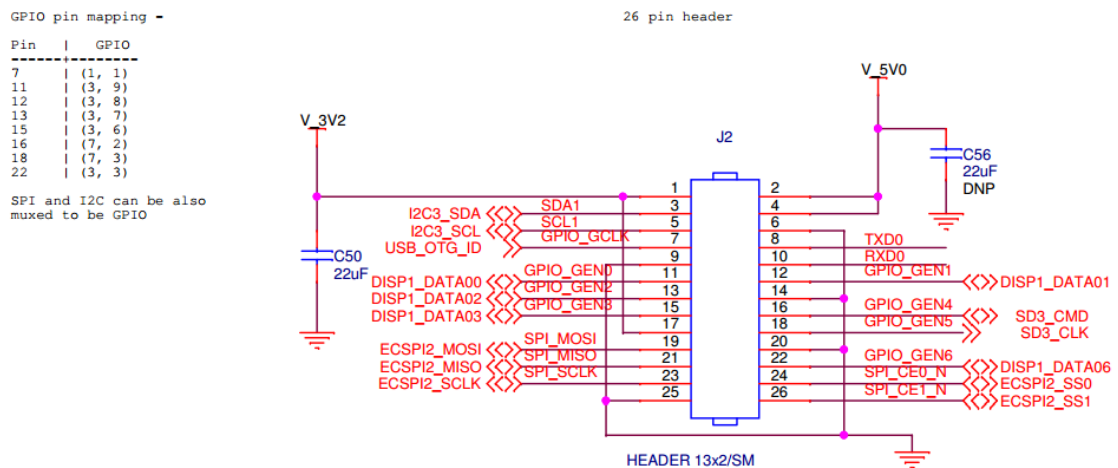
**Down:** move down on the configuration menu

**Up:** move up on the configuration menu

**Exit:** Exit the configuration menu

### 4 I/Os Pinout

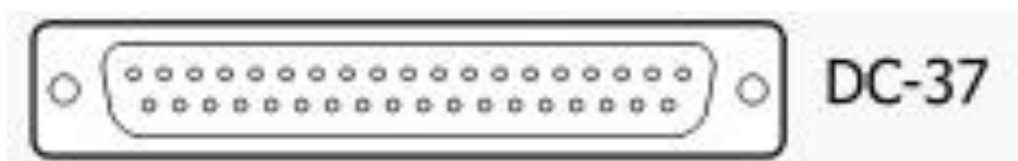
Internal Hummingboard CN26:





External D-Sub 37 female connector Pinout:

<b>GPIO</b>	<b>D-Sub 37</b>	<b>GPIO</b>	<b>D-Sub 37</b>	<b>GPIO</b>	<b>D-Sub 37</b>	<b>GPIO</b>	<b>D-Sub 37</b>	<b>GPIO</b>	<b>D-Sub 37</b>
<b>01</b>	3Vdc	<b>09</b>	3Vdc	<b>17</b>	-	<b>25</b>	DISP1_DATA01 // GPIO_GEN1	<b>33</b>	-
<b>02</b>	I2C3_SDA // SDA1	<b>10</b>	ECSPI2_MOSI // SPI_MOSI	<b>18</b>	-	<b>26</b>	GND	<b>34</b>	-
<b>03</b>	I2C3_SCL//SCL1	<b>11</b>	ECSPI2_MISO // SPI_MISO	<b>19</b>	-	<b>27</b>	SD3_CMD // GPIO_GEN4	<b>35</b>	-
<b>04</b>	USB_OTG_ID // GPIO_GCLK	<b>12</b>	ECSPI2_SCLK // SPI_SCLK	<b>20</b>	5Vdc	<b>28</b>	SD3_CLK // SD3_CLK	<b>36</b>	-
<b>05</b>	GND	<b>13</b>	GND	<b>21</b>	5Vdc	<b>29</b>	GND	<b>37</b>	-
<b>06</b>	DISP1_DATA00 // GPIO_GEN0	<b>14</b>	-	<b>22</b>	GND	<b>30</b>	DISP1_DATA06 // GPIO_GEN6	<b>38</b>	-
<b>07</b>	DISP1_DATA02 // GPIO_GEN2	<b>15</b>	-	<b>23</b>	TXD0	<b>31</b>	DISP1_DATA06 // SPI_CE0_N	<b>39</b>	-
<b>08</b>	DISP1_DATA03 // GPIO_GEN3	<b>16</b>	-	<b>24</b>	RXD0	<b>32</b>	ECSPI2_SS1 // SPI_CE1_N	<b>40</b>	-



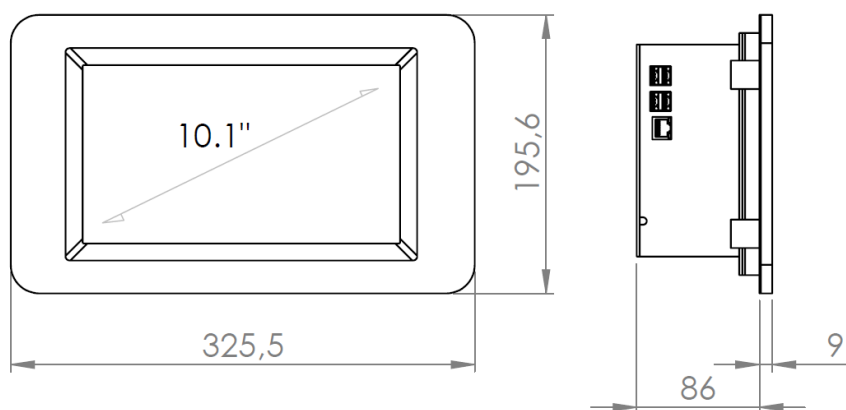


## 5 GPIO with Android:

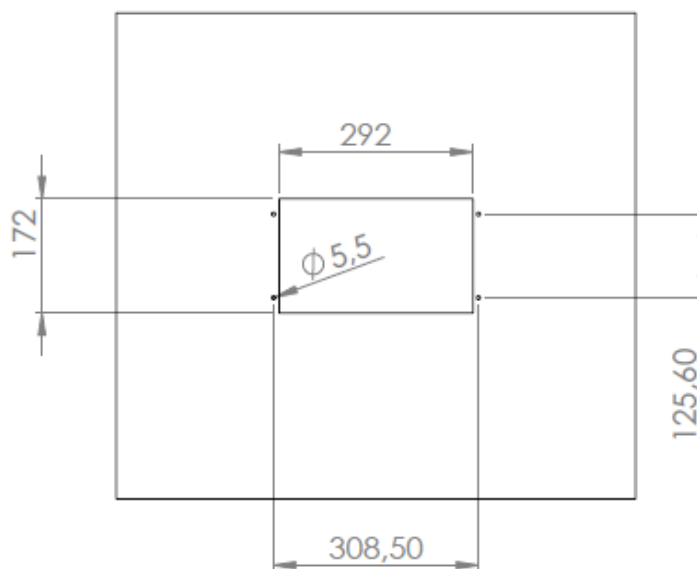
See the link below to get information about how activate GPIOs.

<http://android.serverbox.ch/?p=972>

## 6 Hummtouch 10.1" Dimensions:



## 7 Mechanical mounting:



About Industrial Shields:

SPAIN

Avda. Castell de Barberà 26, nave 9

08210 Barberà del Vallès (Barcelona)

Tel.+34 635693611

Mail: [industrialshields@industrialshields.com](mailto:industrialshields@industrialshields.com)